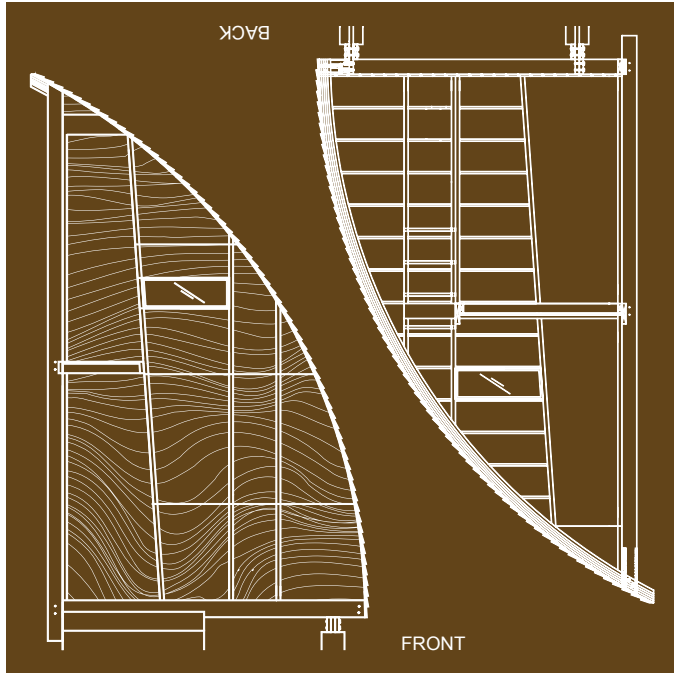


erieLOFT

*by*

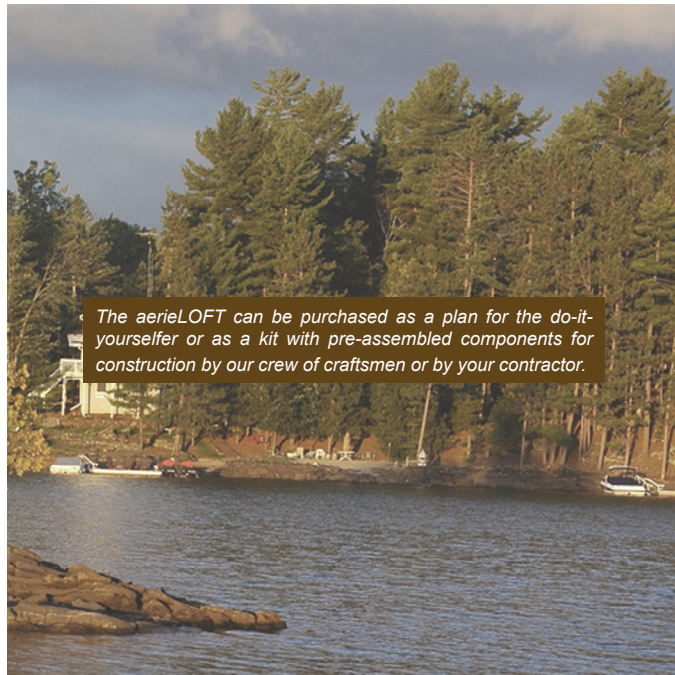
BREATHE ARCHITECTS



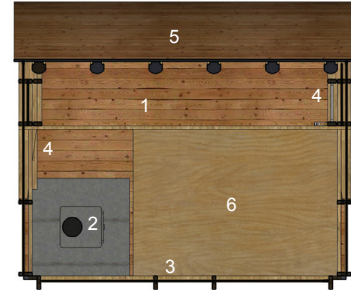
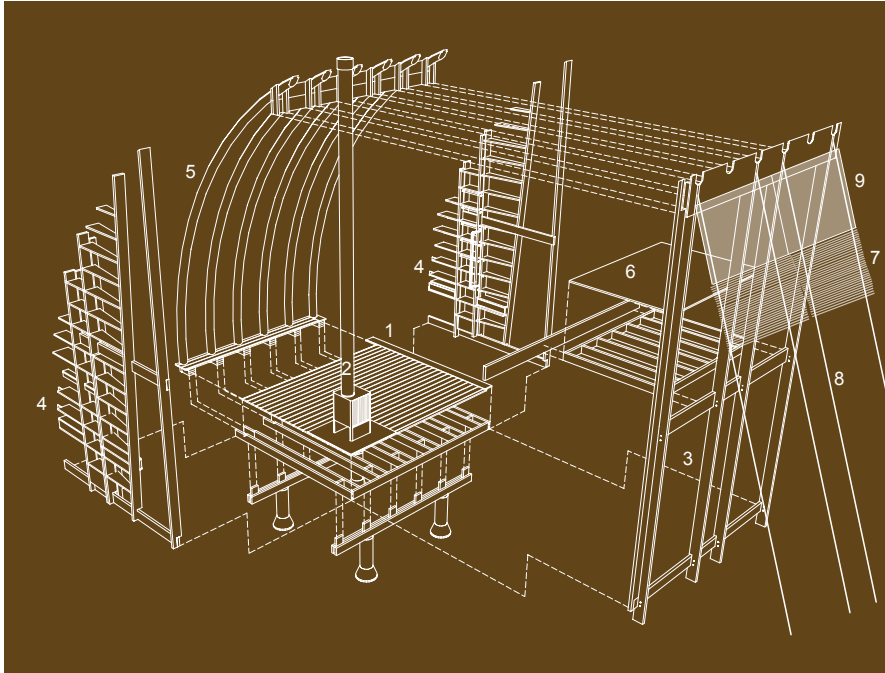
**ALL NATURAL.  
ALL WOOD. ALL GREEN.  
THE NEW CANADIAN CLASSIC.  
IN SUMMER, IMMERSE WITH NATURE  
WITH THE AERIE FULLY OPEN.  
YET WHEN IT MATTERS, BE SHELTERED  
FROM THE INCLEMENT WEATHER.  
SIMPLE, SMART AND SMALL.**

aerieLOFT.CA IS THE NEW ECO-AGENDA.  
LARGE ENOUGH TO RETREAT AND  
FIND SANCTUARY IN THE WOODS.  
SMALL ENOUGH TO ENJOY  
OFF-THE GRID CONVENIENCES

COMPACT ENOUGH FOR A STAYCATION IN YOUR BACKYARD.

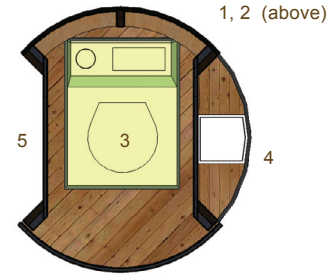
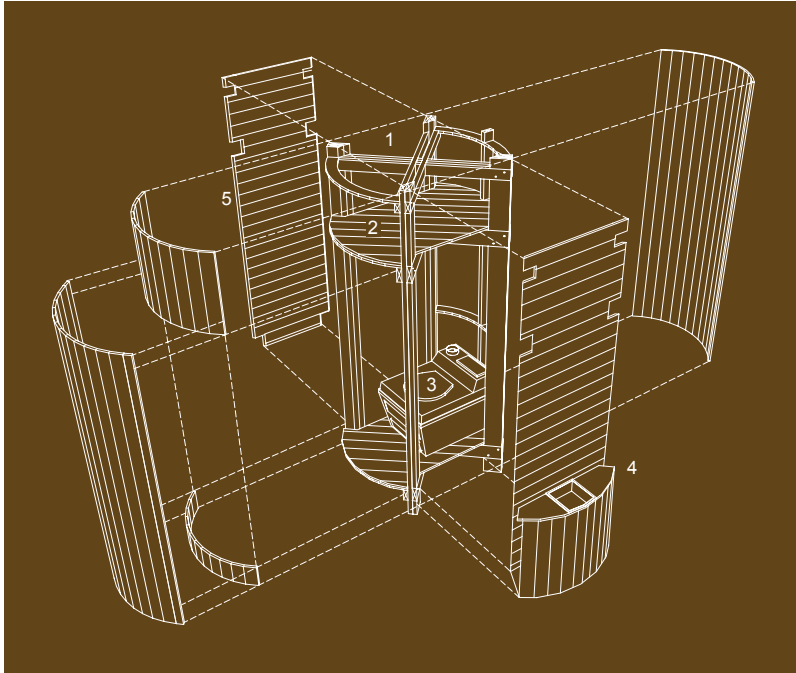


*The aerieLOFT can be purchased as a plan for the do-it-yourselfer or as a kit with pre-assembled components for construction by our crew of craftsmen or by your contractor.*



Introduced at the 2009 Green Living Show, the aerieLOFT is a light and graceful structure that in a short time will fully blend into its surroundings. A soaring 17 foot high curved ship-lapped roof intersects at its apex a screened wall creating the compact sun porch, topped by a loft in the rafters. It is shielded by a shade awning. The iconic lean-to structure can stand alone in the wild, next to your cottage or camp or in your urban garden. Its use can be expanded by accessories such as a compact wood stove, solar panels for lighting, and rainwater collection.

1. Sun porch, 2. Woodstove, 3. Screen Wall, 4. Shelving Wall, 5. Curved Roof, 6. Loft, 7. Shade awning, 8. Tension guy-wire, 9. Solar panels,



aerieLOFT can be fun while still making careful use of all resources. The separate composter unit, Fons, provides for responsible sanitation. Fons, also collects rain in overhead storage so it is ready for use. Perched high above the composting toilet, a gravity water collection system provides water on demand for washing hands, cleaning and showering.

1. Rainwater Collection, 2. Water Cistern, 3. Composting Toilet, 4. Sink, 5. Shower

Martin Liefhebber + Associates

**breathe**  
Architects

**BREATHE ARCHITECTS**  
MARTIN LIEFHEBBER, OAA, MRAIC  
RICO LAW  
PADGET HARDMAN



**OLD SOUL  
CARPENTRY CLUB**  
Builder

**C+C** Engineers Inc

**C+C ENGINEERS INC**  
KHARYN CHAU P. ENG.

**KEVIN HSU DESIGN**  
DESIGNED aerieLOFT  
PROMOTIONAL MATERIALS



Browsing Moose.ca

**greenliving**

LANARK  
**cedar**  
PROUDLY CANADIAN



**solera**  
sustainable  
energies  
company

**ecopods**  
.ca

**Marshs Stoves & Fireplaces**



**BLUE HERON CANOE**

**ATRIA**  
Developments

**KAC**  
K.N.CROWDER mfg.inc.

**green** DESIGN  
STUDIO  
sustainable style for life

**CONTRIBUTORS**

BROWSING MOOSE • THE GREEN LIVING SHOW • LANARK CEDAR  
LOYALIST FOREST • SOLERA • ECOPOD  
MARSH'S STOVES & FIREPLACES • BLUE HERON CANOE  
ATRIA DEVELOPMENTS • K.N.CROWDER • GREEN DESIGN STUDIO



*[www.aerieLOFT.ca](http://www.aerieLOFT.ca)*

*e. [info@aerieLOFT.ca](mailto:info@aerieLOFT.ca)*

*t. 416.222.5565*